

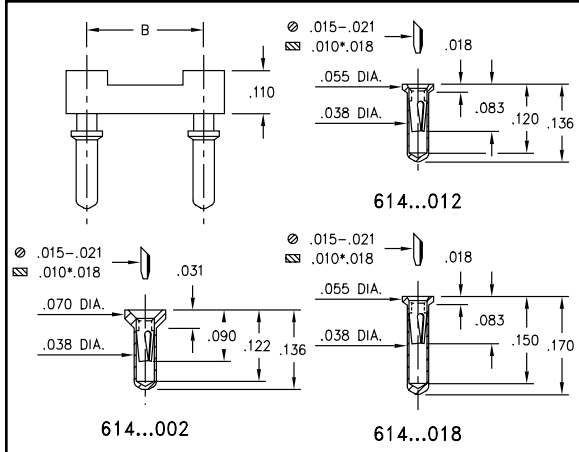


DUAL-IN-LINE SOCKETS

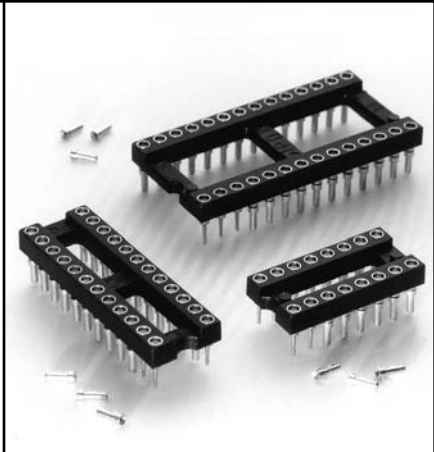
Carrier Type

Ultra Low Profile

Series 614



- Ultra low profile receptacles sit only .018" to .031" high above the board.
- Removable plastic carriers can be returned for reloading.
- Hi-Rel, 3-finger BeCu #11 contact is rated at 3 amps. See page 206 for details.
- Series 614 use MM #0552-1, #0552-2 or #0442-0 pins. See pages 126 and 127 for details.
- Insulators are high temperature thermoplastic.



Total number of pins	Quantity per tube			Ordering Information					
	A	B	C	Length = .136 (.039 Min. Mounting Hole)	Length = .136 (.039 Min. Mounting Hole)	Length = .170 (.039 Min. Mounting Hole)			
10	0.5	0.2	0.3	40	614-XX-210-31-012000	614-XX-210-31-002000	614-XX-210-31-018000		
4	0.2	0.3	0.4	102	614-XX-304-31-012000	614-XX-304-31-002000	614-XX-304-31-018000		
6	0.3	0.3	0.4	67	614-XX-306-31-012000	614-XX-306-31-002000	614-XX-306-31-018000		
8	0.4	0.3	0.4	50	614-XX-308-31-012000	614-XX-308-31-002000	614-XX-308-31-018000		
10	0.5	0.3	0.4	40	614-XX-310-31-012000	614-XX-310-31-002000	614-XX-310-31-018000		
14	0.7	0.3	0.4	28	614-XX-314-31-012000	614-XX-314-31-002000	614-XX-314-31-018000		
16	0.8	0.3	0.4	25	614-XX-316-31-012000	614-XX-316-31-002000	614-XX-316-31-018000		
18	0.9	0.3	0.4	22	614-XX-318-31-012000	614-XX-318-31-002000	614-XX-318-31-018000		
20	1.0	0.3	0.4	20	614-XX-320-31-012000	614-XX-320-31-002000	614-XX-320-31-018000		
22	1.1	0.3	0.4	18	614-XX-322-31-012000	614-XX-322-31-002000	614-XX-322-31-018000		
24	1.2	0.3	0.4	16	614-XX-324-31-012000	614-XX-324-31-002000	614-XX-324-31-018000		
28	1.4	0.3	0.4	14	614-XX-328-31-012000	614-XX-328-31-002000	614-XX-328-31-018000		
20	1.0	0.4	0.5	20	614-XX-420-31-012000	614-XX-420-31-002000	614-XX-420-31-018000		
22	1.1	0.4	0.5	18	614-XX-422-31-012000	614-XX-422-31-002000	614-XX-422-31-018000		
24	1.2	0.4	0.5	16	614-XX-424-31-012000	614-XX-424-31-002000	614-XX-424-31-018000		
28	1.4	0.4	0.5	14	614-XX-428-31-012000	614-XX-428-31-002000	614-XX-428-31-018000		
32	1.6	0.4	0.5	12	614-XX-432-31-012000	614-XX-432-31-002000	614-XX-432-31-018000		
24	1.2	0.6	0.7	16	614-XX-624-31-012000	614-XX-624-31-002000	614-XX-624-31-018000		
28	1.4	0.6	0.7	14	614-XX-628-31-012000	614-XX-628-31-002000	614-XX-628-31-018000		
32	1.6	0.6	0.7	12	614-XX-632-31-012000	614-XX-632-31-002000	614-XX-632-31-018000		
36	1.8	0.6	0.7	11	614-XX-636-31-012000	614-XX-636-31-002000	614-XX-636-31-018000		
40	2.0	0.6	0.7	10	614-XX-640-31-012000	614-XX-640-31-002000	614-XX-640-31-018000		
42	2.1	0.6	0.7	9	614-XX-642-31-012000	614-XX-642-31-002000	614-XX-642-31-018000		
48	2.4	0.6	0.7	8	614-XX-648-31-012000	614-XX-648-31-002000	614-XX-648-31-018000		
50	2.5	0.6	0.7	8	614-XX-650-31-012000	614-XX-650-31-002000	614-XX-650-31-018000		
52	2.6	0.6	0.7	7	614-XX-652-31-012000	614-XX-652-31-002000	614-XX-652-31-018000		
50	2.5	0.9	1.0	8	614-XX-950-31-012000	614-XX-950-31-002000	614-XX-950-31-018000		
52	2.6	0.9	1.0	7	614-XX-952-31-012000	614-XX-952-31-002000	614-XX-952-31-018000		
64	3.2	0.9	1.0	6	614-XX-964-31-012000	614-XX-964-31-002000	614-XX-964-31-018000		
SPECIFY PLATING CODE XX=					13◇	93	99	43◇	44◇
Sleeve (Pin)					10μ" Au	200μ" Sn/Pb	200μ" Sn/Pb	200μ" Sn	200μ" Sn
Contact (Clip)					30μ" Au	30μ" Au	200μ" Sn/Pb	30μ" Au	200μ" Sn